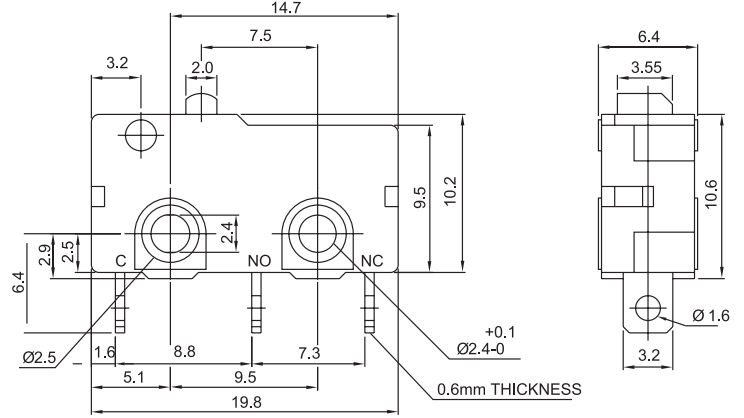


SM SERIES

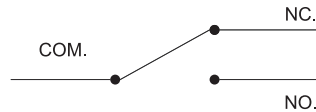
DIMENSIONS (Unless otherwise specified, a tolerance of ± 0.4 mm applies to all dimensions.)



SPECIFICATIONS

Contact Resistance (initial).....Max. 300m Ω
 Insulation Resistance (at 500VDC/minute).....Min. 100M Ω
 Dielectric Strength.....AC 1000VAC (50~60Hz)
 Storage Temperature Range..... -25°C to 85°C
 Storage Humidity.....at 40°C, Max. 85% R.H
 Vibration.....10~55Hz, displacement 0.75mm (p-p)
 Electrical Service Life.....0.1A - Min. 1,000,000 operations
 Other rating - Min. 6,000 operations
 Electrical Operating Frequency0.1A - 120 operations per minute
 Other rating - 10~30 operations per minute
 Mechanical Service Life.....Min. 10,000,000 operations
 Mechanical Operating Frequency.....120 operations per minute

CONTACT CONFIGURATION



RATING

0.1A 125 VAC, 0.1A 60 VDC,
 5A 125/250 VAC, 10.1A 125/250 VAC

APPLICATION

Telephone, Air conditioner, Computer, Humidifier, Alarm, Time recorder, Mixer & Chopper, Solder gun, Neon phone, Fax machine, Joystick, Water pump, Gas detector, Pencil sharpener, Money sorter, Food processor, Electric knife, Toy car, Juicer, Electric steak pan .

CERTIFICATE INFORMATION

UL 10.1A 125/250 VAC, 5A 125/250 VAC - 6000 cycles (Temp: 120°C)
 0.1A125 VAC, 0.1A 60 VDC - 6000 cycles (Temp: 65°C)
 CSA 5A125/250 VAC, 0.1A 125/250 VAC, 0.1A 30 VDC, 3A 30 VDC - 6000 cycles

THE SELECTION OF RATING & FORCE

MODEL	RATING	D	L	S	H	Q	T
SM	0.1A	*	*	*	*	*	*
	5A		*	*	*	*	*
	10.1A				*	*	*

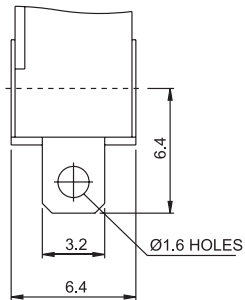
THE Symbol "*" to represent the result is accept

ORDERING INFORMATION

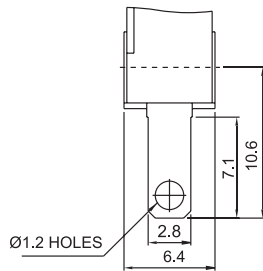
S	M	0	5	S	0	3	P	O	Z			
SERIES PREFIX	C O D E	RATING CURRENT		C O D E	OPERATING FORCE	C O D E	ACTUATOR TYPE	C O D E	TERMINAL TYPE	C O D E	CONTACT ARRANGEMENT	ROHS CODE
	P1	0.1A 30VDC 0.1A 125/250VAC		T	MAX HEAVIER	00		A		0	S.P.D.T.	
	05	5A 125VAC/250VAC		Q	HEAVIER	01		B		1	S.P.S.T NO	
	10	10.1A 125VAC/250VAC		H	HEAVY	02		C		2	S.P.S.T NC	
				S	STANDARD	03		D				
				L	LIGHT	04		E				
				D	SLIGHT	05		P				
						06						
						07						
						08						
						09						
						10						
						11						

TERMINAL TYPES (The thickness of each terminal is 0.6mm)

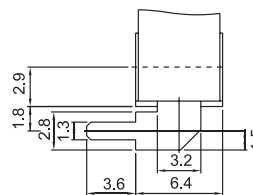
Solder terminal ATYPE



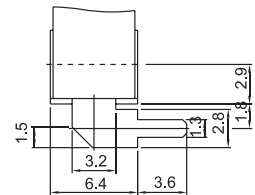
Quick connect terminal B TYPE (#110)



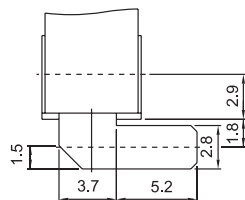
Side PCB terminal C TYPE



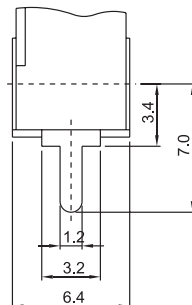
Side PCB terminal D TYPE



Side PCB terminal E TYPE

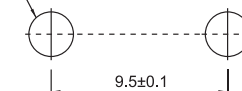


PCB terminal PTYPE

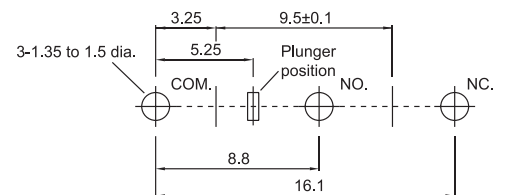


MOUNTING HOLES

2-2.4 dia. mounting holes
or M2.3 screw holes.



(For PCB Terminal)



ORDERING CHARACTERISTICS

SWITCH TYPE	PART SUFFIX	OF MAX.		OP (mm)	PT MAX. (mm)	OT Min. (mm)	MD MAX. (mm)	FP MAX. (mm)	RF Min. (gf)
		H	S						
SM□□□-00□□-Z		H	249	11.4±0.3	1.1	0.4	0.2	12.2	50
		S	146						35
		L	104						20
SM□□□-01□□-Z		H	60	11.8±0.8	3.6	0.6	0.8	14.6	15
		S	35						10
		L	25						6
SM□□□-02□□-Z		H	55	11.8±0.9	4.0	0.6	0.8	14.9	13
		S	33						8
		L	25						6
SM□□□-03□□-Z		H	45	11.8±1.5	6.1	0.8	1.5	16.4	13
		S	25						6
		L	20						5
SM□□□-04□□-Z		H	56	13.7±1.0	4.6	0.8	0.8	17.3	13
		S	34						8
		L	25						5
SM□□□-05□□-Z		H	60	17.5±0.8	3.8	0.8	0.8	20.5	15
		S	35						8
		L	25						6
SM□□□-06□□-Z		H	48	19.0±1.5	5.7	1.0	1.0	23.2	10
		S	28						6
		L	20						4
SM□□□-07□□-Z		H	30	11.8±2.0	8.6	1.5	1.8	18.4	7
		S	20						4
		L	15						2
SM□□□-08□□-Z		H	30	-2.3±3.0	4.7	1.0	1.9	5.4	6
		S	20						4
		L	15						2
SM□□□-09□□-Z		H	18	11.8±3.0	13.3	1.0	2.9	22.1	4
		S	12						2.5
		L	8						1.5
SM□□□-10□□-Z		H	78	15.2±0.6	3.0	0.7	0.6	17.6	15
		S	46						10
		L	33						6
SM□□□-11□□-Z		H	55	15.1±1.5	5.2	0.6	0.9	18.8	13
		S	35						8
		L	26						5