

with electrostatic focusing, 75° magnetic deflection, small neck diameter, low filament input power and metal-backed flat faceplate, no ion-trap (with internal graticules if requested)

Application

with W-screen: in monitor-television sets and as camera-monitor-tube; with GH-, GL-, GM-, GR- or LD-screen: in industrial display units

Screen Types

M 17-11 GH
M 17-11 GL
M 17-11 GM
M 17-11 GR
M 17-11 LD
M 17-11 W

Minimum Useful Display Area: 95 mm × 125 mm

System Structure

Deflection Method: magnetic
Deflection Angle: 75°
Focusing Method: electrostatic
Beam Centring: magnetic

Base: miniature, with exhaust connection (JEDEC No. E7-91)

Cavity contact: JEDEC No. J1-22

Heating

$U_f = 11 \text{ V}$
 $I_f = 68 \text{ mA}$

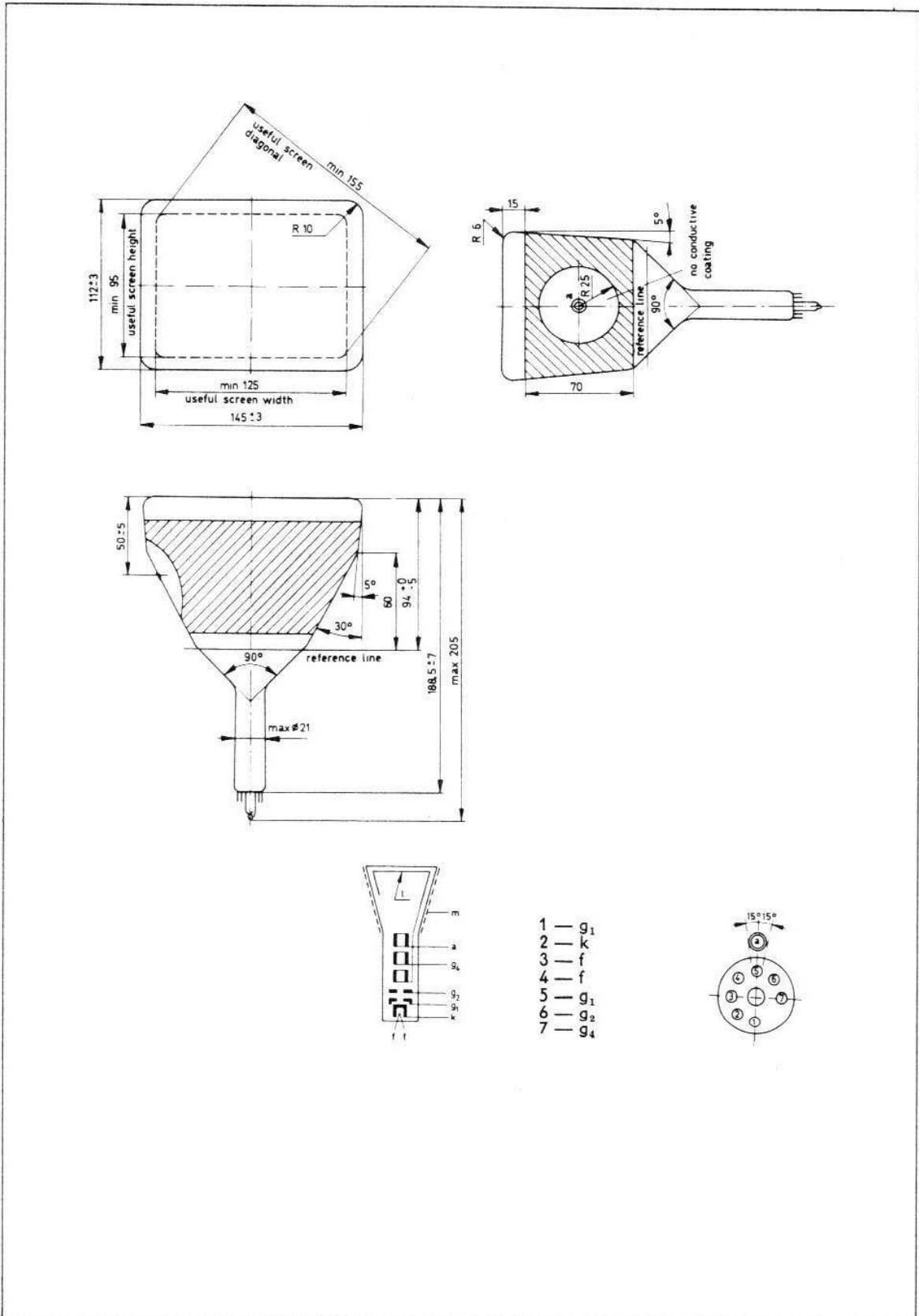
Maximum Ratings

$U_a = 14 \text{ kV}$
 $U_{g2} = 350 \text{ V}$
 $U_{g4} = 500 \text{ V}$

Typical Operation

at grid control
 $U_a = 13 \text{ kV}$
 $U_{g2} = 350 \text{ V}$
 $U_{g4} = 50 \dots 400 \text{ V}$
 $-U_{g1 \text{ cut off}} = 46 \dots 91 \text{ V}$

at cathode control
 $U_a = 13 \text{ kV}$
 $U_{g2} = 200 \dots 350 \text{ V}$
 $U_{g4} = 50 \dots 400 \text{ V}$
 $U_k = \text{approx. } 47 \text{ V}$



- 1 — g_1
- 2 — k
- 3 — f
- 4 — f
- 5 — g_1
- 6 — g_2
- 7 — g_4