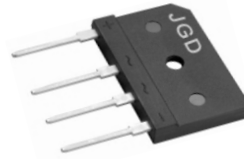


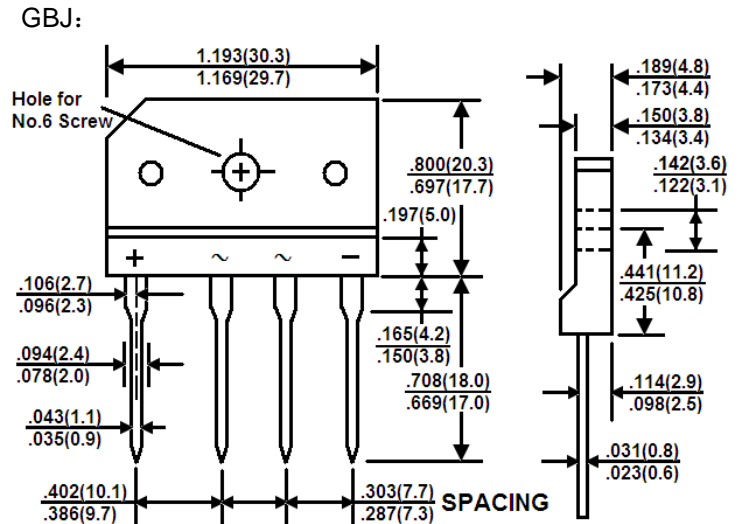
Features

- * Plastic package has underwriters laboratory flammability classification 94V-0
- * Ideal for printed circuit boards
- * Glass passivated chip junction
- * High Surge Current Capability
- * High temperature soldering guaranteed 270°C/10 seconds, 0.375(9.5mm) lead length



RoHS
COMPLIANT

Package Outline Dimensions in inches (millimeters)



Mechanical Data

- * Case: Molded plastic body over passivated junctions

Maximum Ratings and Electrical Characteristics

Rating at 25 °C ambient temperature unless otherwise specified. Single phase, half wave, 60 Hz, resistive or inductive load. For capacitive load, derate current by 20%.

Type Number	Symbols	GBJ 5001	GBJ 5002	GBJ 5004	GBJ 5006	GBJ 5008	GBJ 5010	Unit
Maximum Repetitive Peak Reverse Voltage	V_{RRM}	100	200	400	600	800	1000	V
Maximum RMS Voltage	V_{RMS}	70	140	280	420	560	700	V
Maximum D.C Blocking Voltage	V_{DC}	100	200	400	600	800	1000	V
Maximum Average Forward (with heat sink)(Note1) Rectified Current @ $T_C=100^\circ\text{C}$ (without heat sink)	$I_{F(AV)}$	50						A
Peak Forward Surge Current single half sine-wave superimposed on rated load	I_{FSM}	400						A
Maximum instantaneous forward voltage drop per leg at 25A	V_F	1.0						V
Maximum Reverse Current @ $T_A=25^\circ\text{C}$ at Rated D.C Blocking Voltage @ $T_A=125^\circ\text{C}$	I_R	5.0 500						μA
I^2t Rating for Fusing ($t < 8.3\text{ms}$)	I^2t	660						A^2S
Typical thermal resistance per leg (Note2)	$R_{\theta JC}$	1.5						$^\circ\text{C/W}$
Operating and Storage Temperature Range	T_J/T_{STG}	-55 to +150						$^\circ\text{C}$

Note: 1、 Device mounted on 300mm×300mm×1.6mm Cu plate heat sink.
2、 Thermal resistance from junction to case with units mounted on heat sink.

Ratings and Characteristic Curves

FIG.1-FORWARD CURRENT DERATING CURVE

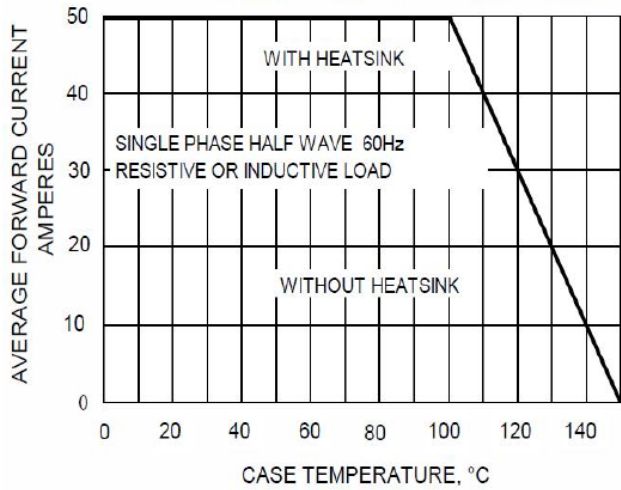


FIG.2-MAXMUN NON-REPETITIVE SURGE CURRENT

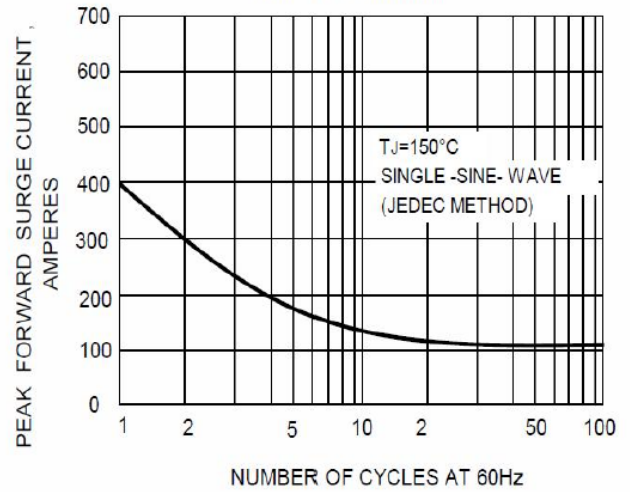


FIG.3-TYPICAL FORWARD CHARACTERISTICS

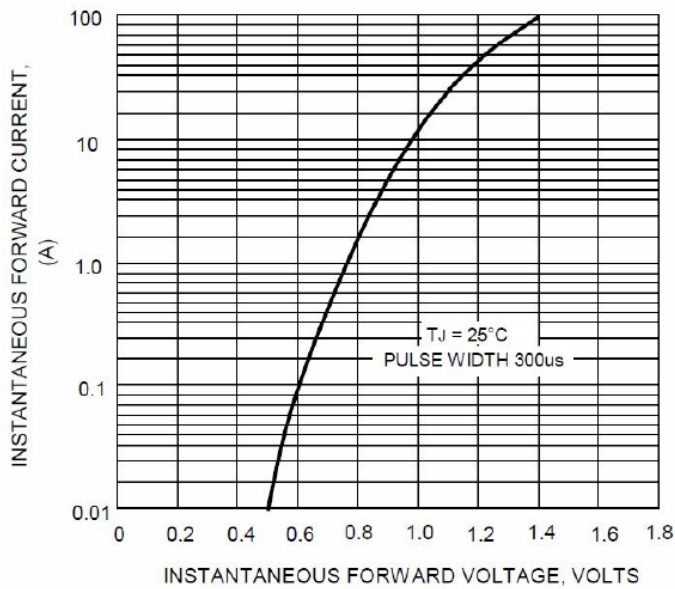
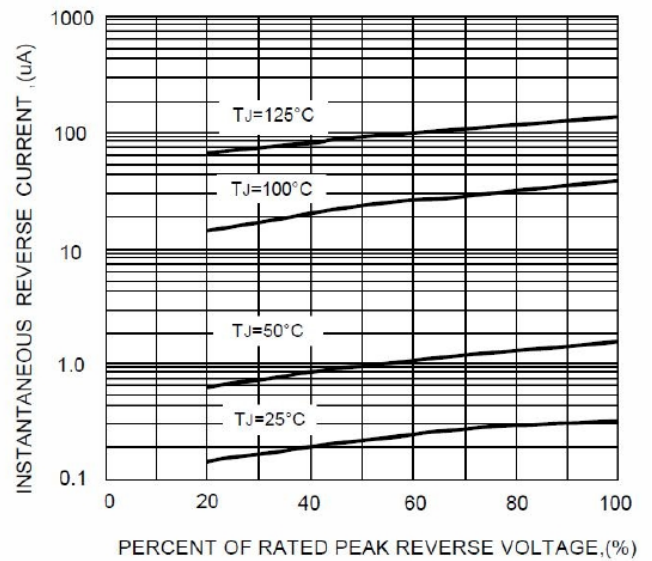


FIG.4-TYPICAL REVERSE CHARACTERISTICS





GBJ5001 THRU GBJ5010

Glass Passivated Single Phase Bridge Rectifiers

Ordering Information

Part No.	Package	Packing
GBJ5001~GBJ5010	GBJ	15pcs/Tube